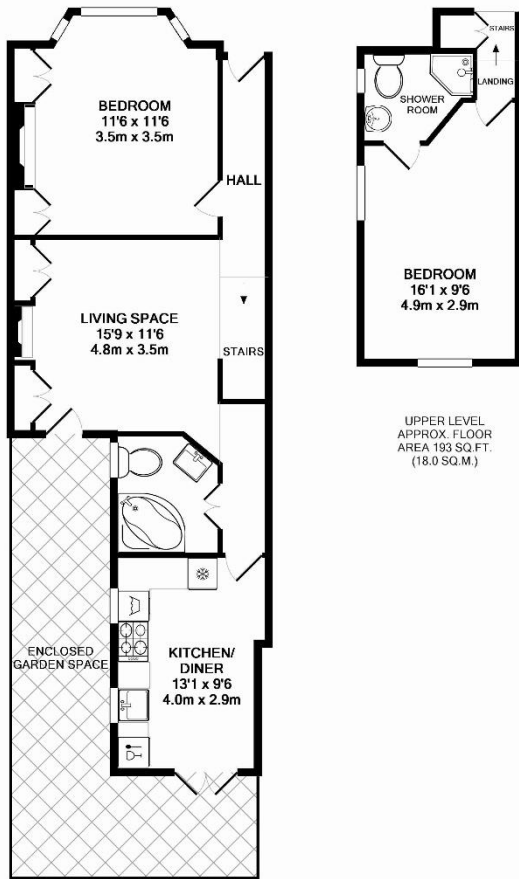




RICHMOND BRIDGE
RESIDENTIAL

Archel Road
London, W14
£2,250.00





UPPER LEVEL
APPROX. FLOOR
AREA 193 SQ.FT.
(18.0 SQ.M.)

BASEMENT LEVEL
APPROX. FLOOR
AREA 570 SQ.FT.
(53.0 SQ.M.)

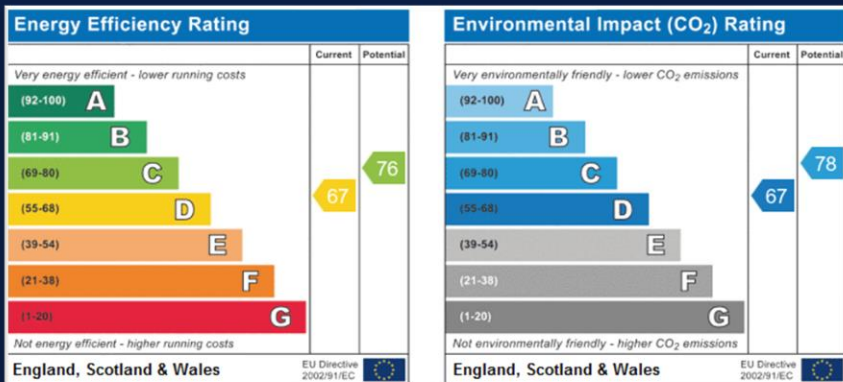
TOTAL APPROX. FLOOR AREA 764 SQ.FT. (70.9 SQ.M.)

Whilst every attempt has been made to ensure the accuracy of the floor plan contained here, measurements of doors, windows, rooms and any other items are approximate and no responsibility is taken for any error, omission, or mis-statement. This plan is for illustrative purposes only and should be used as such by any prospective purchaser. The services, systems and appliances shown have not been tested and no guarantee as to their operability or efficiency can be given
Made with Metroplan 62013

PROPERTY DETAILS

A fantastic split level (lower and upper ground floor) flat located in this desirable residential road, well positioned for local transport links offered by both Barons Court and West Kensington underground stations. Offered UNFURNISHED and to be redecorated throughout and with new carpeting to the upper bedroom and stairway, the remainder of the property benefits from wooden flooring and is modern and well presented, with light and airy living and entertainment space. With its own front door, the property is arranged over two floors, with one double bedroom on the lower ground and second bedroom with ensuite shower room on the upper ground floor, a spacious reception/dining area and modern kitchen opening up onto a private south facing garden.

- UNFURNISHED
- Two double bedrooms one with built in wardrobes
- En suite shower room and w/c
- Bathroom with over bath shower and w/c
- Spacious reception room
- Modern kitchen
- Private Patio



TO BOOK A VIEWING:

E: lettings@rbresidential.com

T: 020 8892 2244

See all our properties on our website

www.rbresidential.com

