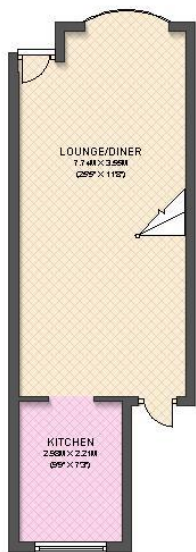


20 ST GEORGES ROAD RICHMOND TW9 2LE
 APPROX. 34.0 SQ. METRES (366.1 SQ. FEET)



FIRST FLOOR
 APPROX. 31.2 SQ. METRES (337 SQ. FEET)

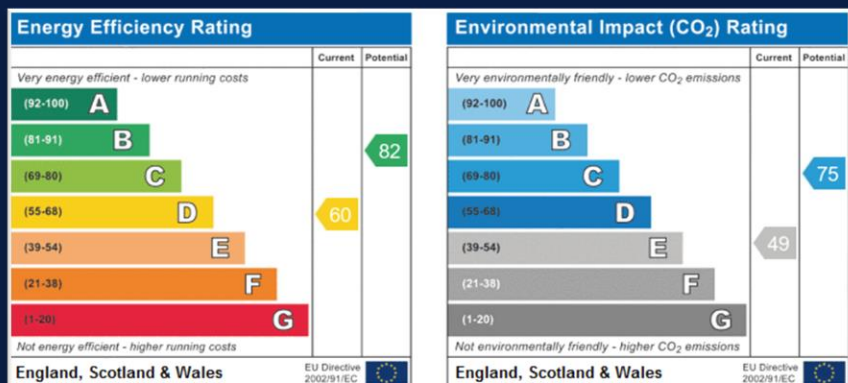


TOTAL AREA: APPROX. 65.2 SQ. METRES (701.8 SQ. FEET)

PROPERTY DETAILS

Ideally located within walking distance of Richmond Station and the varied selection of shop and restaurants of Richmond Town Centre, we are pleased to offer this charming terraced Victorian cottage which is offered UNFURNISHED. Benefitting from partial wood flooring, this characterful property offers 2 bedrooms – 1 double and 1 good sized single both with fitted wardrobes, open plan lounge and dining room, kitchen and bathroom with over bath shower. The property further benefits from both a front and back garden. Gas central heating. Residents Permit Parking

- Two bedrooms both with fitted wardrobes
- Open plan lounge and dining room
- Fitted kitchen
- Bathroom with over bath shower
- Front and back garden
- Gas central heating
- Resident permits parking



TO BOOK A VIEWING:

E: lettings@rbresidential.com

T: 020 8892 2244

See all our properties on our website

www.rbresidential.com

